



Installation Guidelines

for PALOPAQUE™ Cladding System



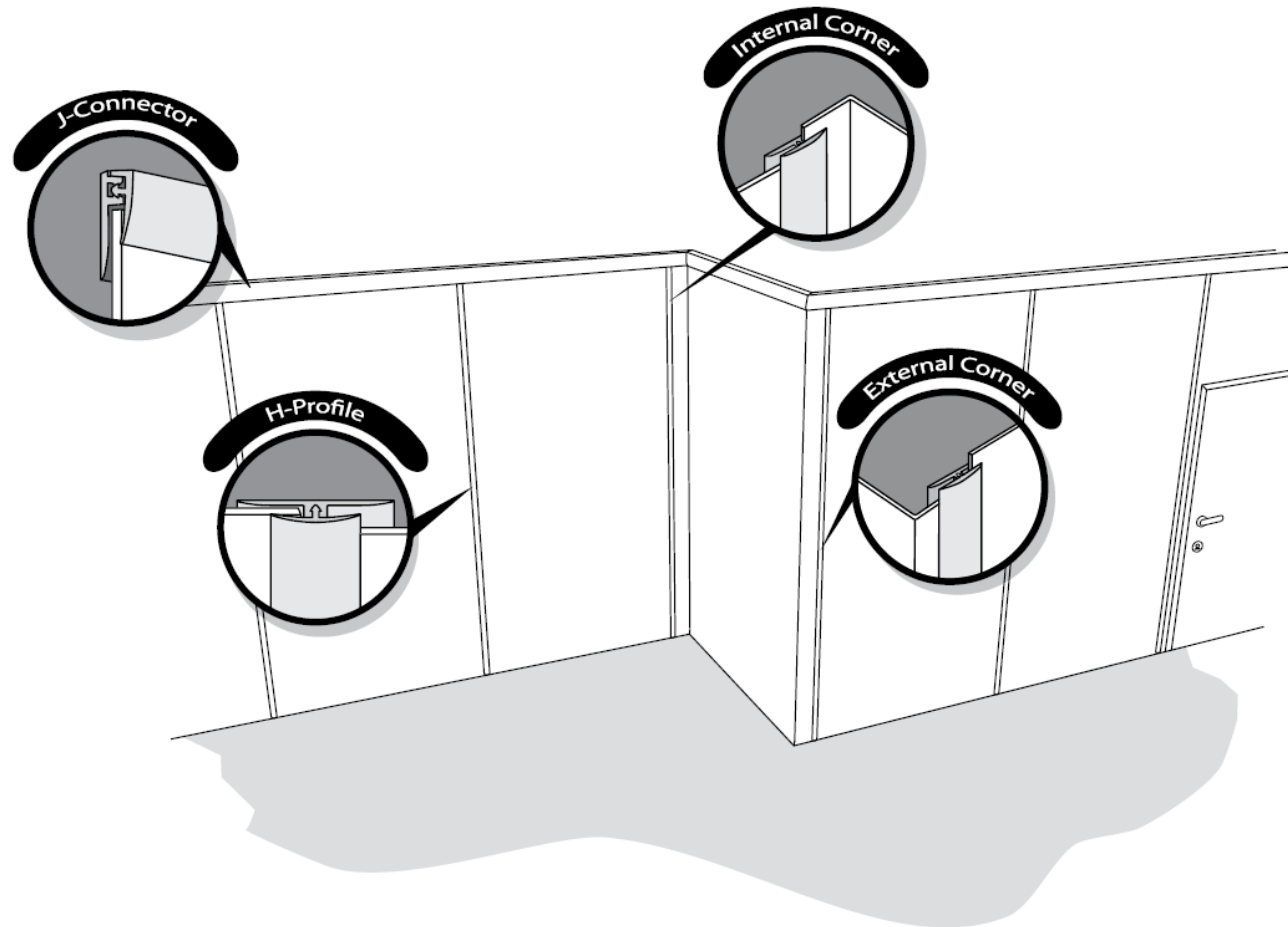


Contents

- Complete wall installation
- Cladding installation guidelines
- Grooving & bending guidelines (corner)



Complete Wall Installation



Cladding System Installation Guidelines





Wall Cladding Installation – Before you start

IMPORTANT NOTE

Palopaque/Palopaque HYG will expand and contract with changes in temperature.

Allow materials to acclimatize at room temperature (min. 24 hours) before beginning the installation.



Wall Cladding Installation – Before you start

WALL PREPARATION 1/3

GENERAL

Examine the walls that are to receive the wall covering. They must be clean, smooth, dry and free of any oils or loose paint prior to start of work.

New Drywall or Plaster

New drywall should be taped and sanded smooth. When finished, all surfaces should be wiped clean to remove any dust. New plaster should be allowed to cure a minimum of 30 days.



Wall Cladding Installation – Before you start

WALL PREPARATION 2/3

Concrete

All concrete walls should be made smooth with suitable filler.

Painted Surfaces

Painted surfaces must be tested for adhesion.

It might be that the paint will have to be removed or sealed with Water Base Mastic Primer.



Wall Cladding Installation – Before you start

WALL PREPARATION 3/3

Existing Wall Coverings

- When installing over existing materials like wallpaper, the entire surface must be inspected for areas that are not securely bonded to the wall surface.
- Any loose areas must be removed and repaired as required.
- The existing wall covering should then be cleaned with a mild detergent and wiped dry.
- Be certain all cleaned areas are completely dry before proceeding.



Wall Cladding Installation – Before you start

WALL PRIMING 1/2

New Drywall or Plaster

Walls must be sealed/primed using Mastic Primer or equivalent.

Painted Drywall or Plaster

- Painted walls **MUST** be checked for adhesion as described above under the wall preparation section.
- If the paint will not provide an acceptable base for adhesion, the most severe areas must be removed and primed with Interiors Water Base Mastic Primer.



Wall Cladding Installation – Before you start

WALL PRIMING 2/2

Concrete, Concrete Block, Wood Paneling, Plywood or Similar

These surfaces must be made smooth with a suitable filler and then primed with Interiors Mastic Primer.

Flexible or Rigid Wall Covering over Drywall or Plaster

Existing wall covering must be clean, and their installation must be secure before installing Palopaque wall covering.

- “Priming is not necessary for these surfaces”

Note:

Adhesive testing is the responsibility of the contractor on site.



Wall Cladding Installation – Before you start

SHEET PREPARATION

DO NOT REMOVE MASKING FOIL UNTIL END OF INSTALATION

- Prepare the first sheet by making any necessary cutouts or scribe the edge to fit the inside corner if applicable.
- Remember to allow a small gap around door and window frames, ceilings and baseboards.
- Use a straight edge to ensure neat cutouts.
- Place the sheet with the bottom side up and wipe the sheet with a clean damp cloth to remove any dust or dirt.

You are now ready to apply adhesive.



Wall Cladding Installation

STARTING

Full Height Installation

- Establish a plumb line is located at the edge of the first sheet.
- This will serve as a starting point for the wall covering to be installed on, this will ensure the following sheets will be installed plumb.
- Establish a plumb line at the beginning of each new installation of wall covering.

Wainscot Installation

- Establish a level line at the specified height for the entire length of the run.
- Install the wall covering by aligning the top edge with this line.
- A level line should be established for each new installation.



Wall Cladding Installation



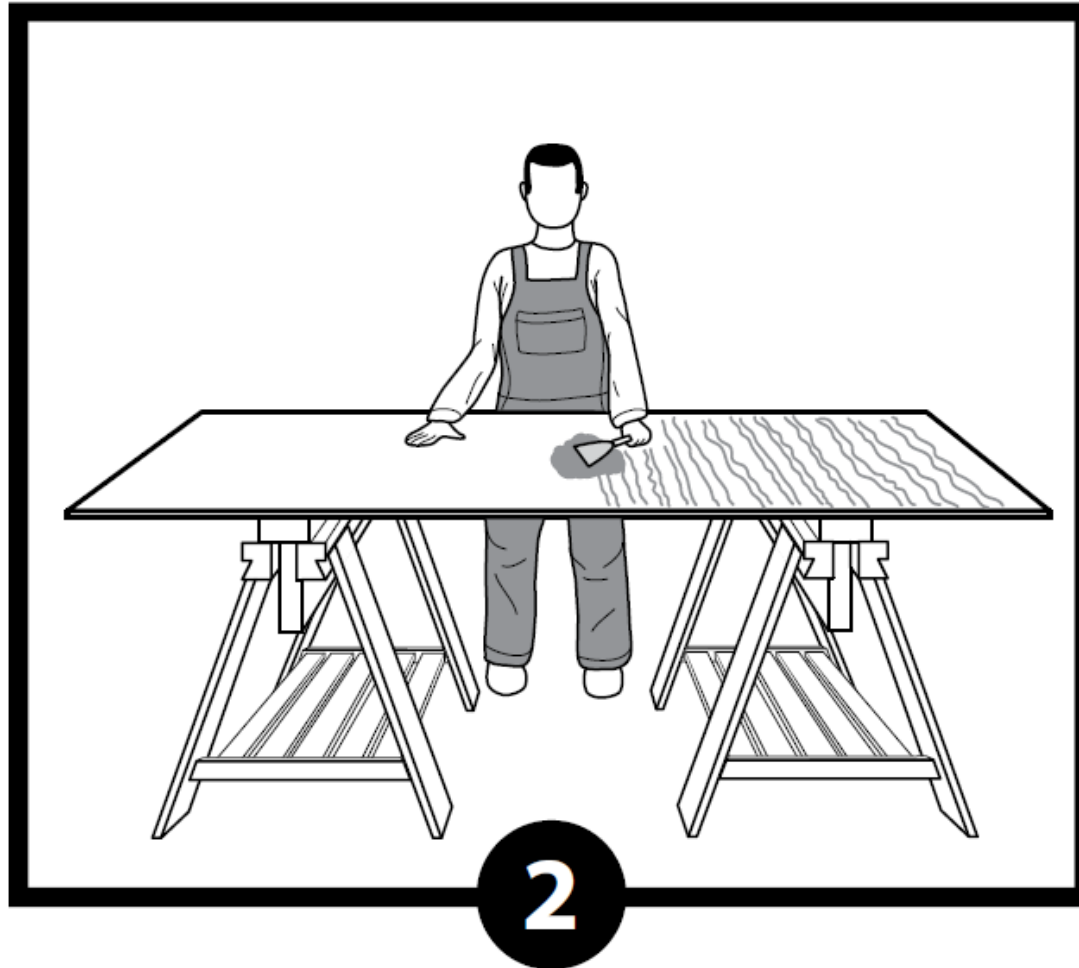
Use a 3mm Notch trowel to apply adhesive to an area of the wall surface that can be completed within the cure time of the adhesive.

Make sure the entire area receives an even coat.

DO NOT ALLOW THE ADHESIVE TO OVER CURE!



Wall Cladding Installation



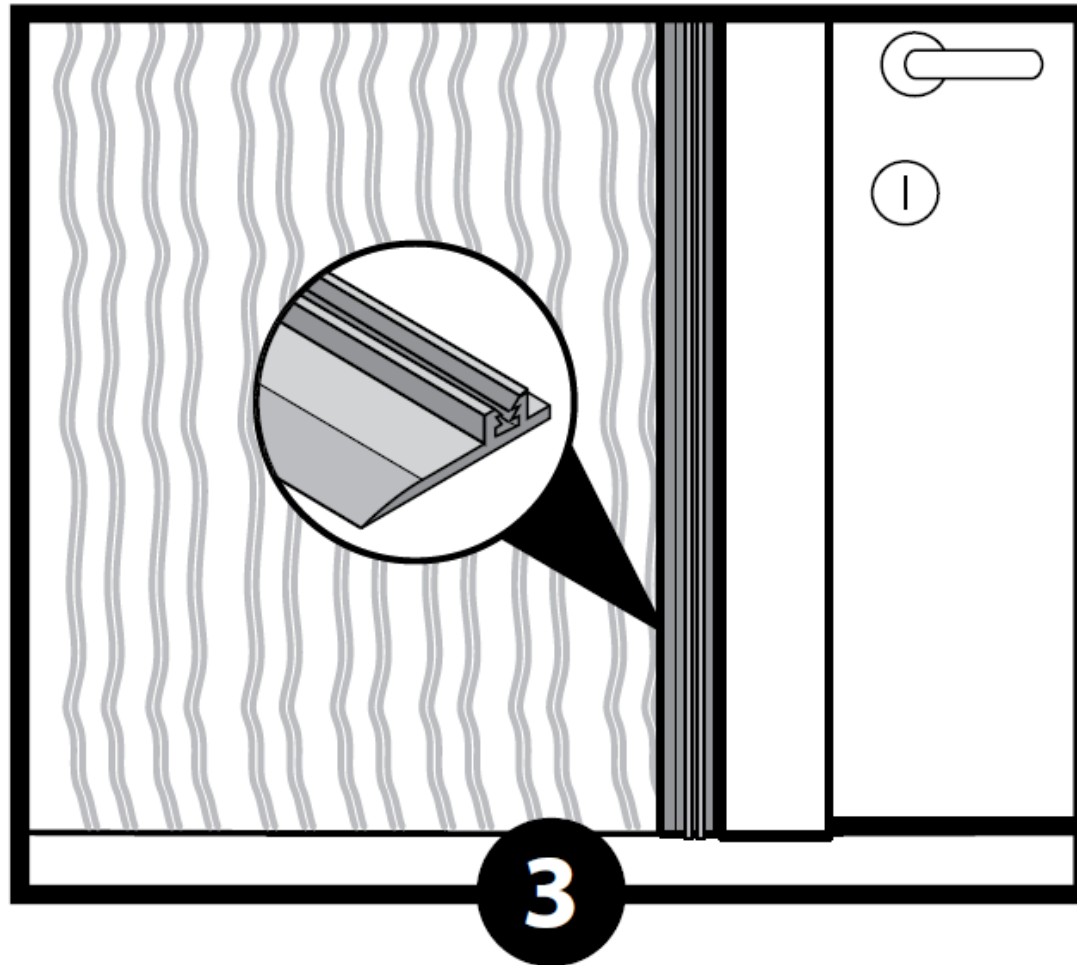
If a double side adhesive is to be used !

Apply the adhesive in the same way on the back of the Palopaque.

DO NOT ALLOW THE ADHESIVE TO OVER CURE!



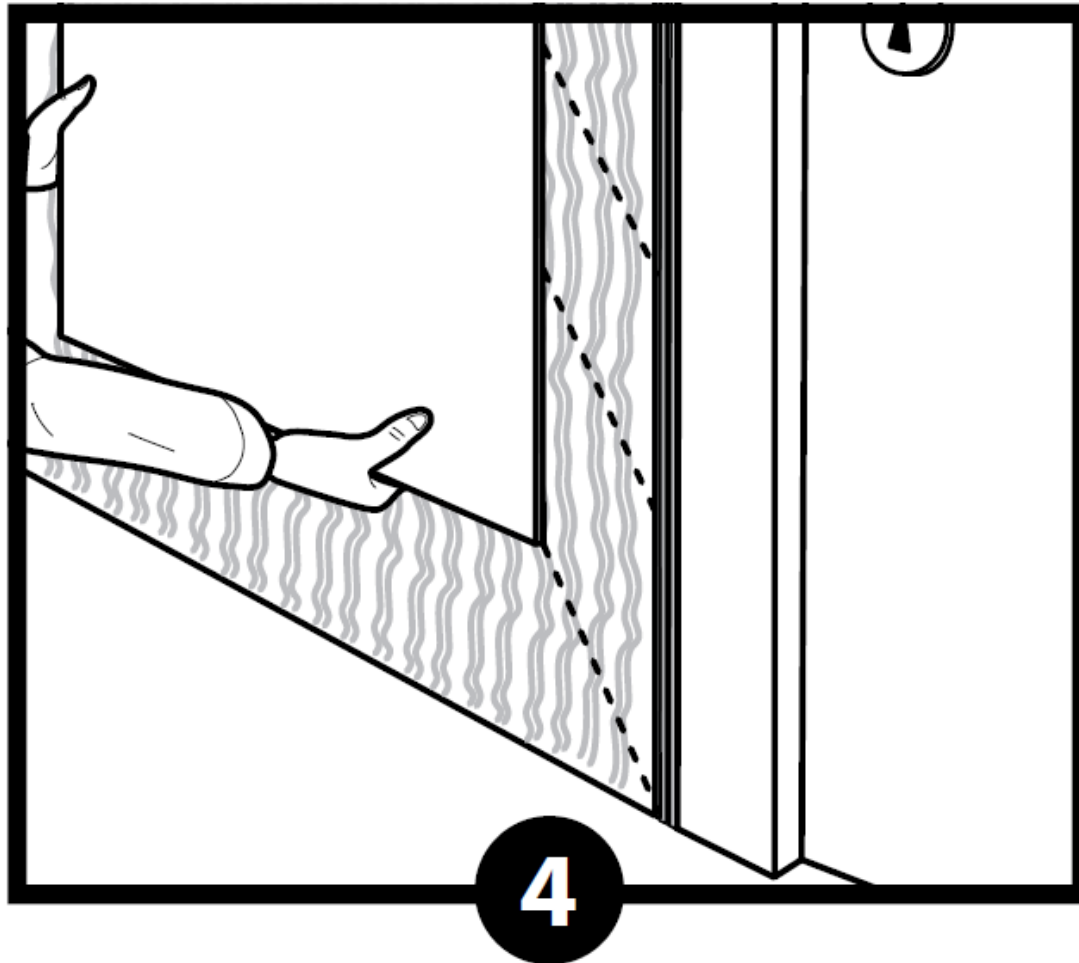
Wall Cladding Installation



If a half H base is in use place it before placing the first sheet, along the line previously drawn.



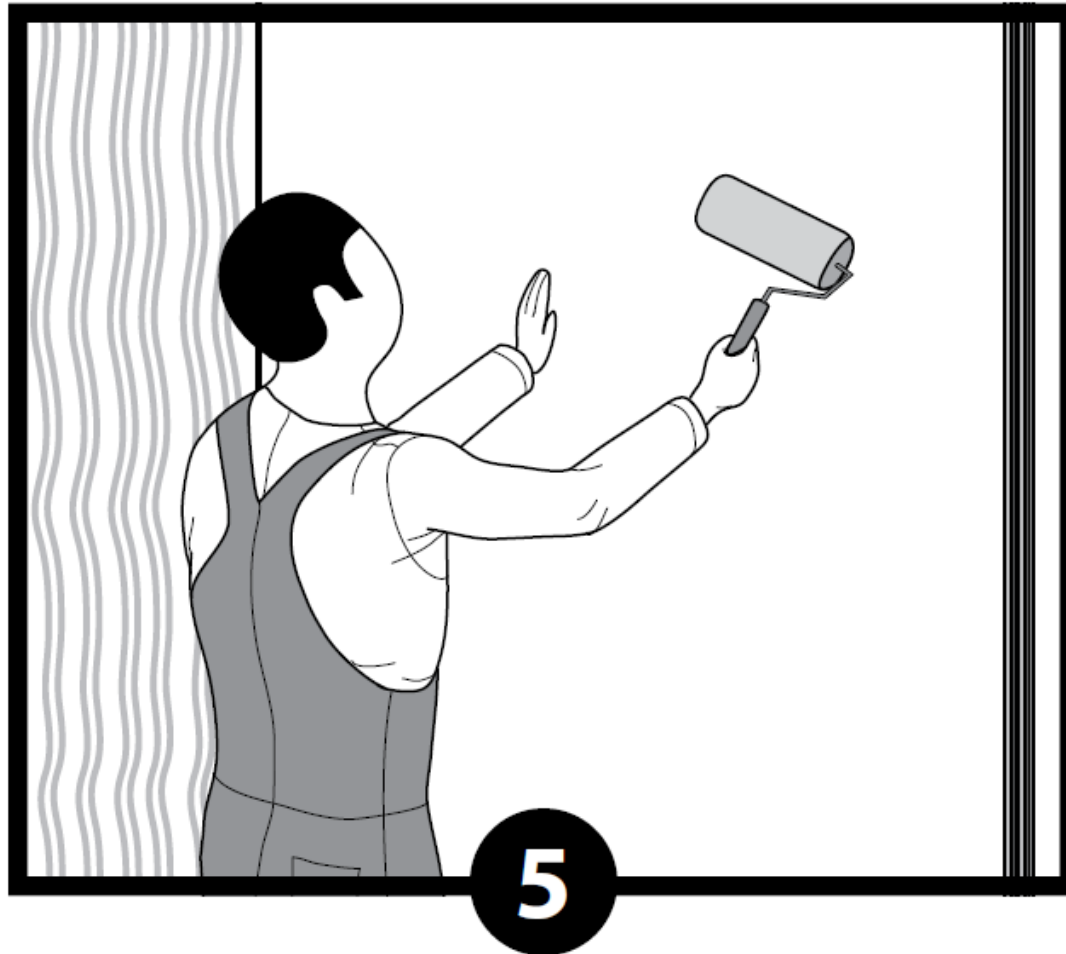
Wall Cladding Installation



Position the first
Palopaque sheet



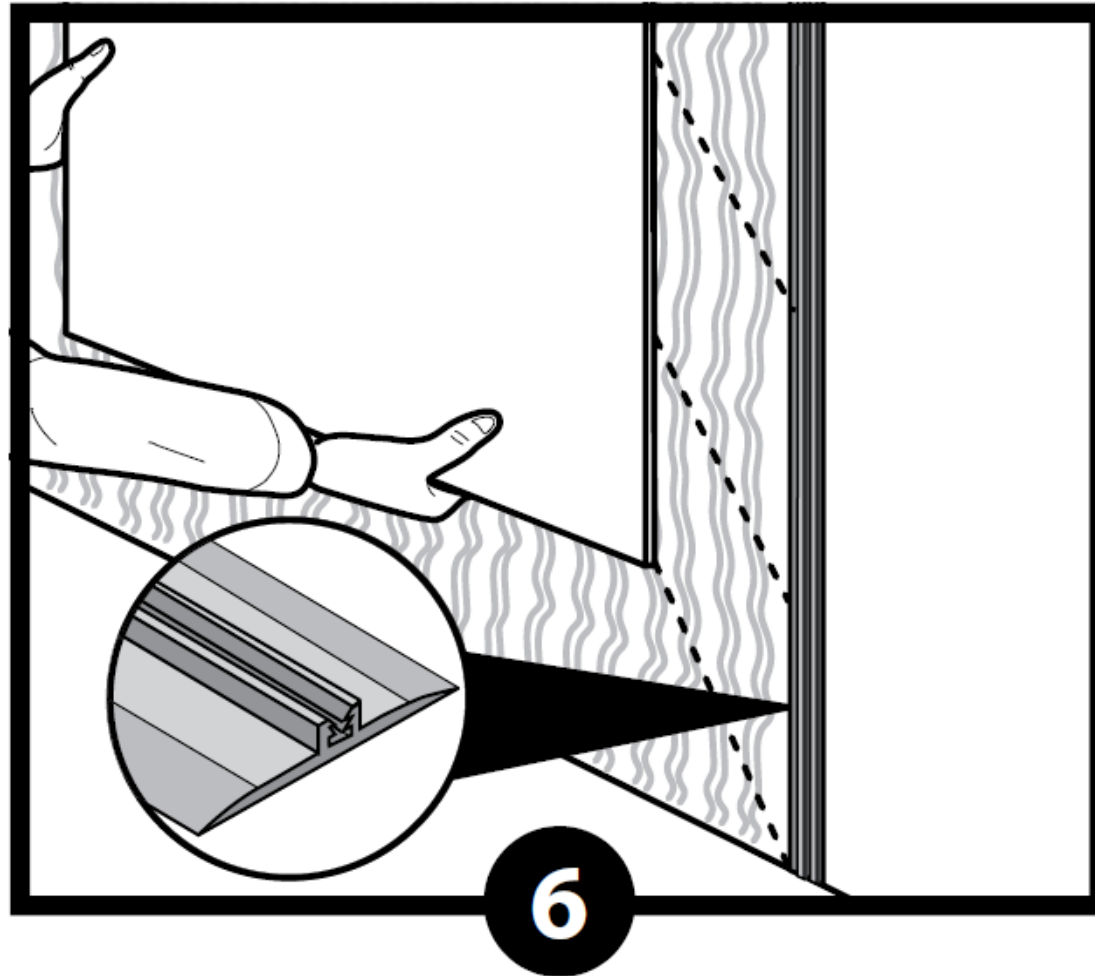
Wall Cladding Installation



Apply pressure to the surface of the Panel in order to ensure good adhesion and removal of any trapped air

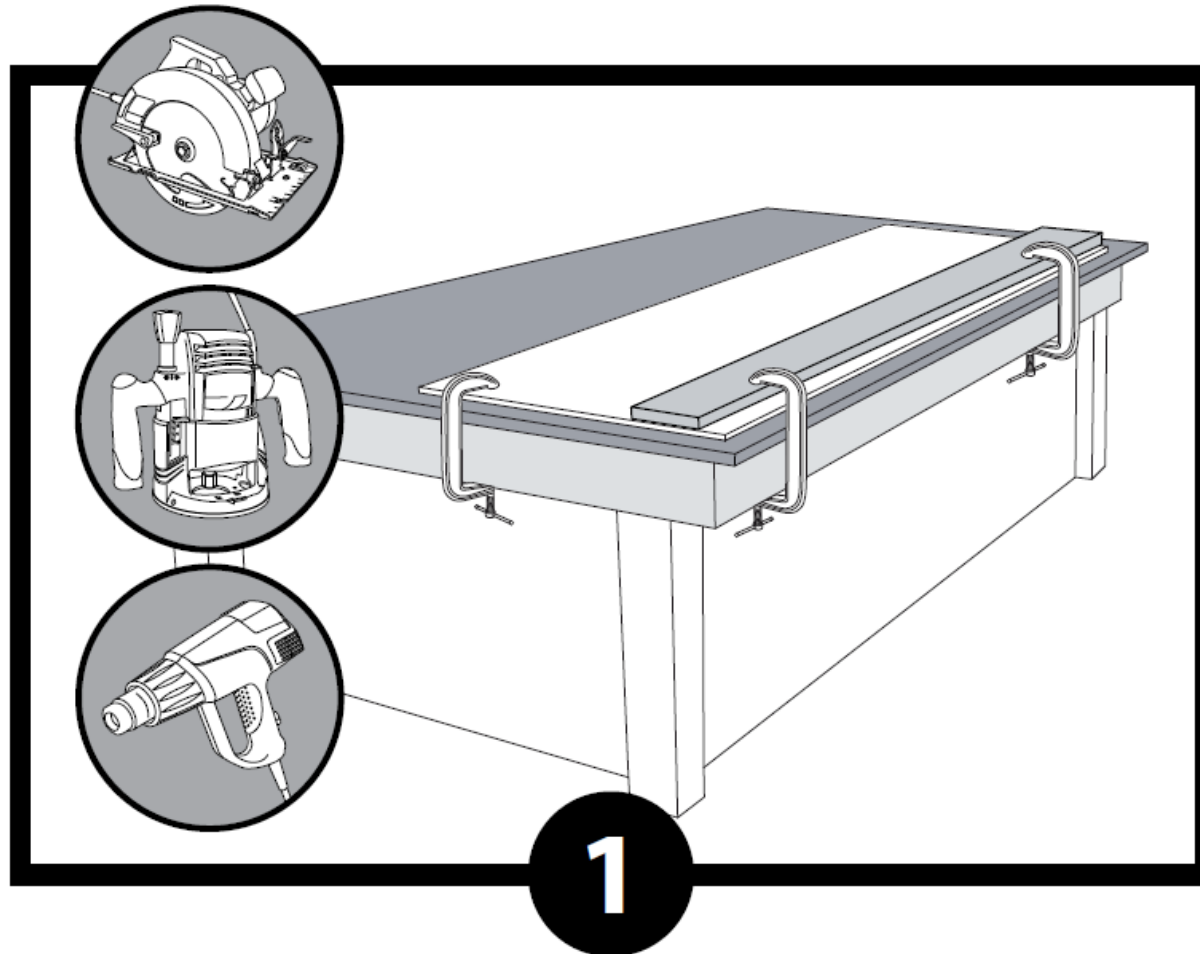


Wall Cladding Installation



Position the H section
base
place next Palopaque
sheet and repeat until
corner

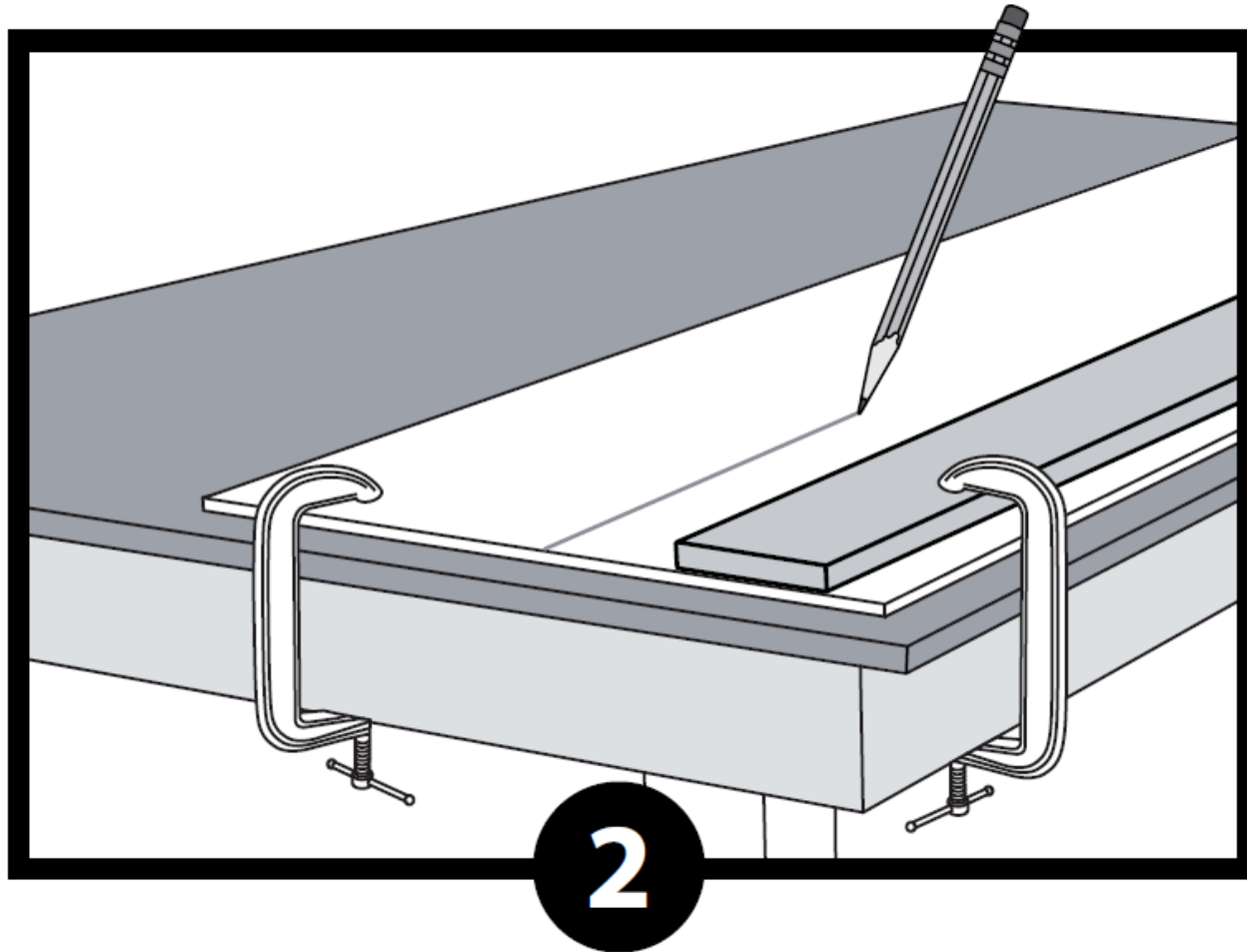
Grooving & Bending Guidelines



Measure the distance from sheet edge to corner, place sheet on working surface and secure it.

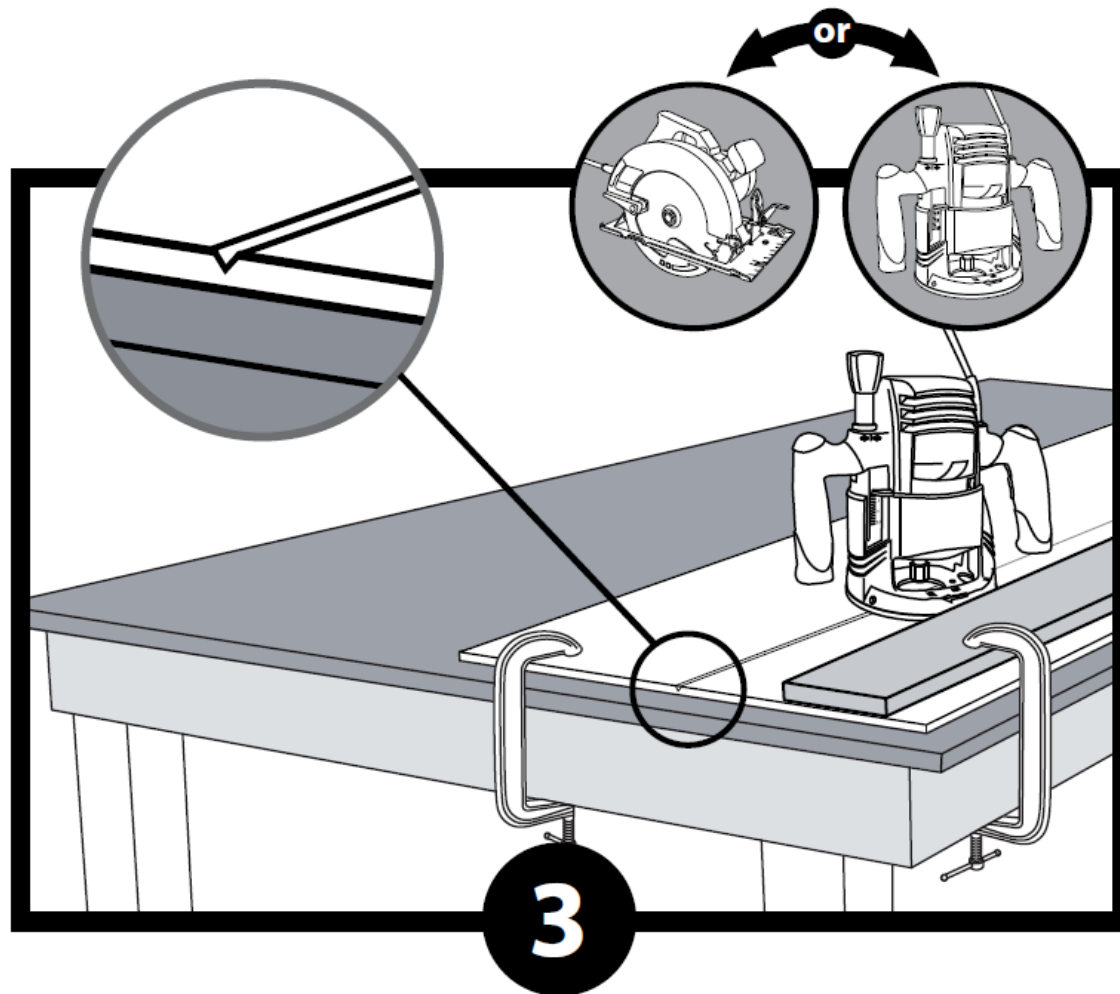


Grooving & Bending Guidelines



Draw the line where the sheet will be bent, on the back side of the Palopaque sheet

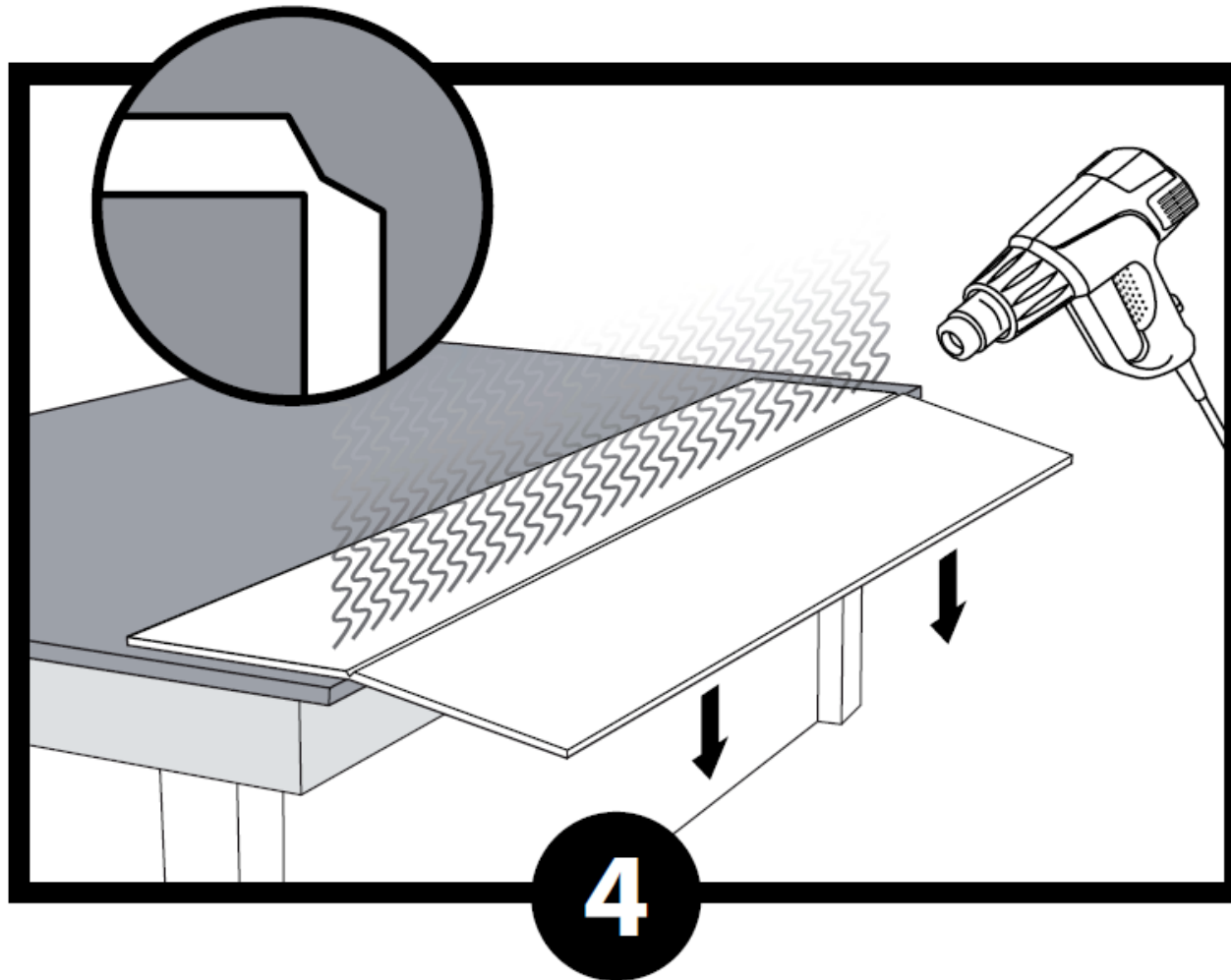
Grooving & Bending Guidelines



It is advised to prepare a groove on the back side, prior to bending, along the marked line.

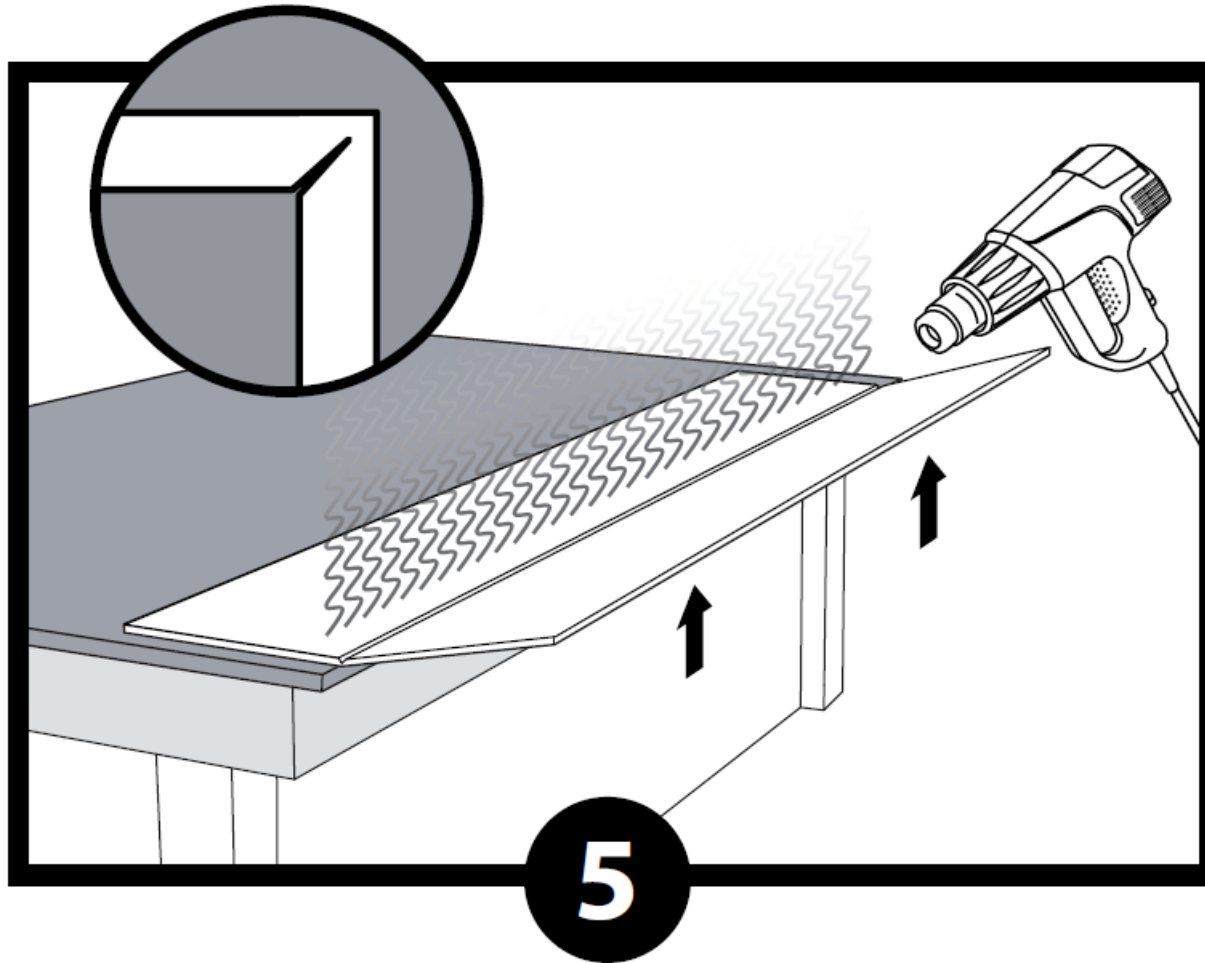
The depth should not exceed half the thickness of the sheet.

Grooving & Bending Guidelines



For an internal corner, place the groove over a table edge and use hot industrial fan to soften the groove. Once softened bend down to desired angle.

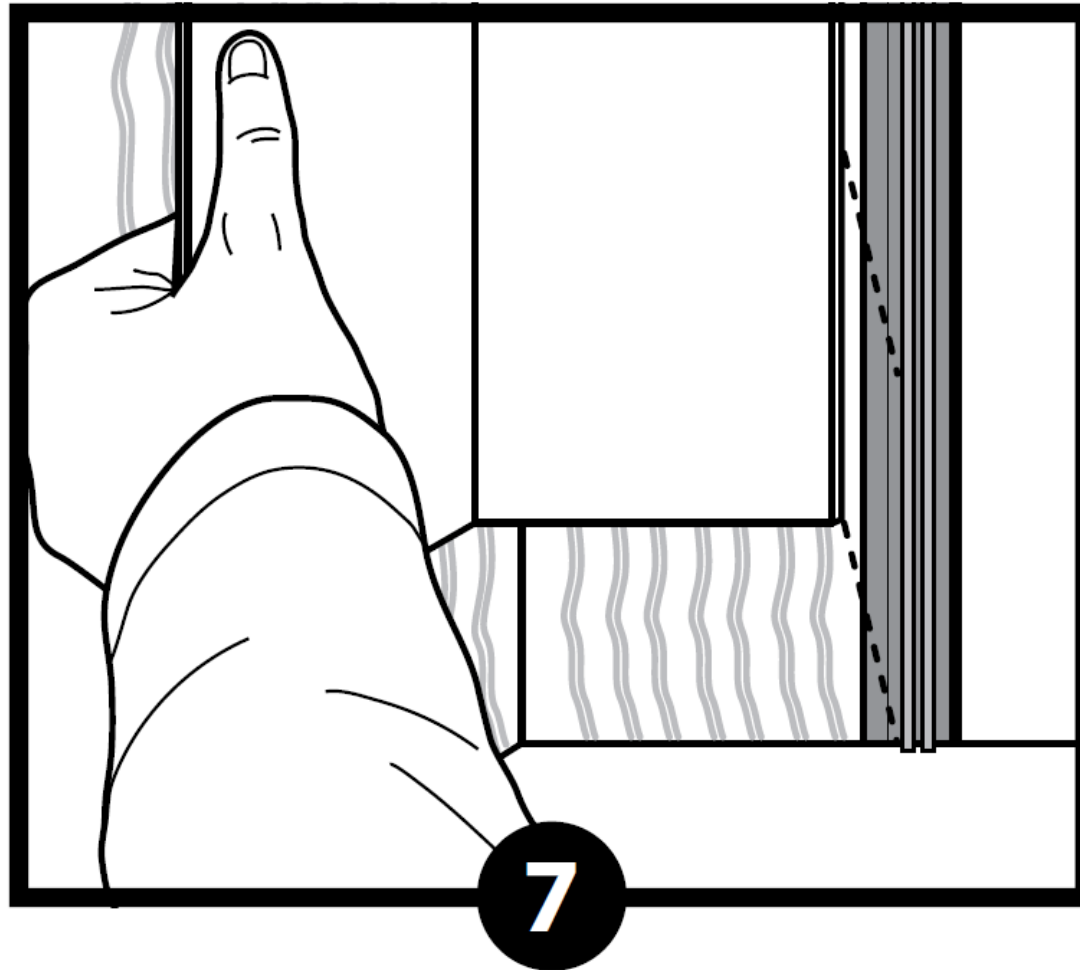
Grooving & Bending Guidelines



For external corner place the grove over a table edge and use hot industrial fan to soften the grove. Once soften bend up to desired angle.



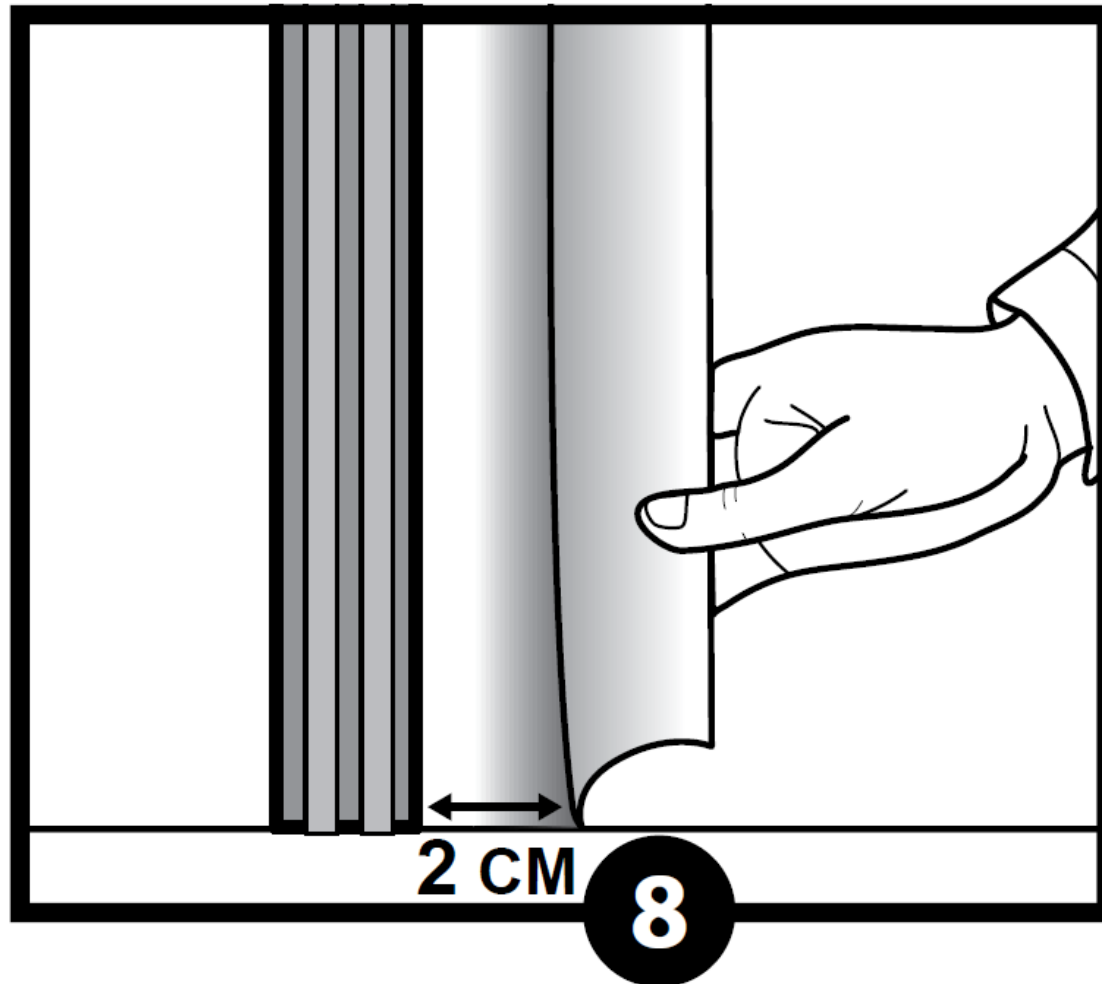
Wall Cladding Installation



Place the folded sheet in the corner and continue installation as previous described

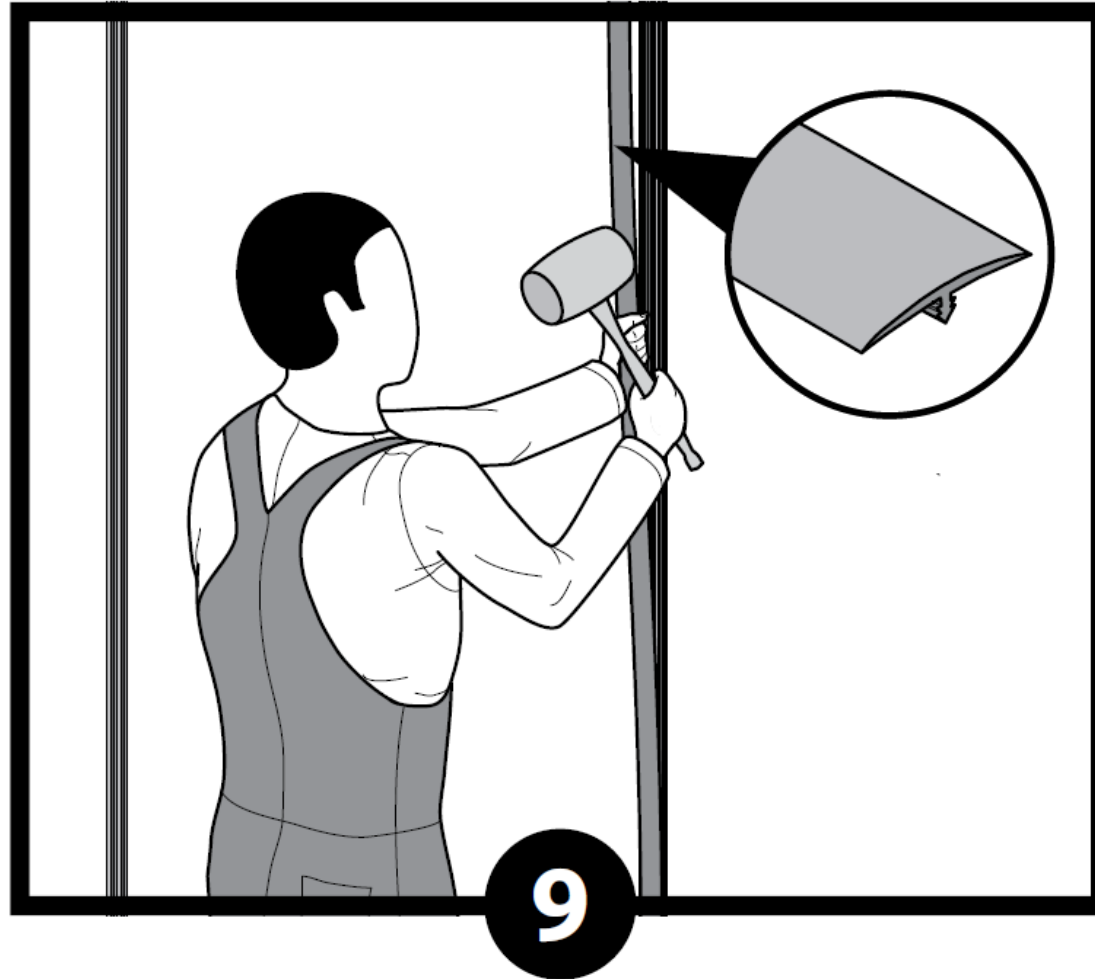


Wall Cladding Installation



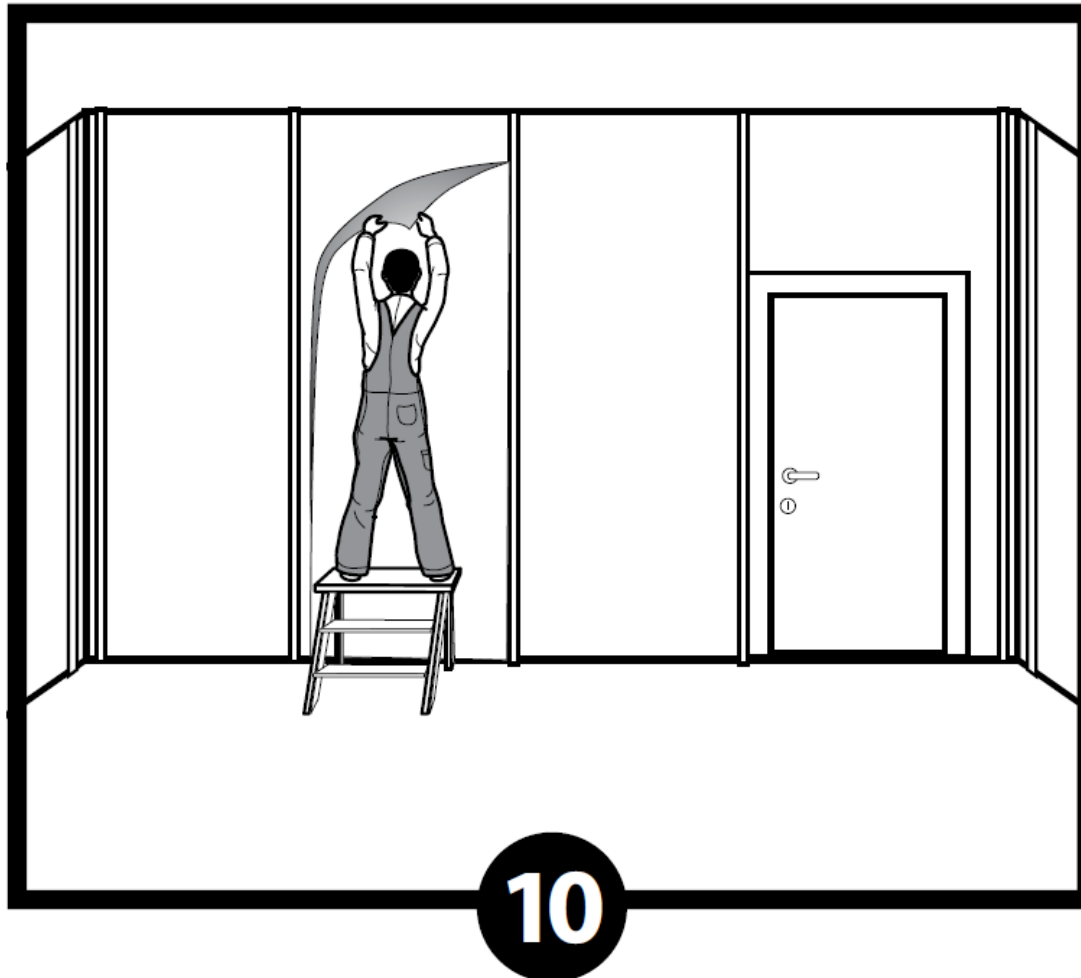
When all sheets are in place, peel off the edges of the protective film, approx 2cm from edge

Wall Cladding Installation



Attach the profile caps onto the bases using a rubber mallet

Wall Cladding Installation



**Peel off the
protective films
after **all other
jobs on site are
finished****

Thank you.